



Bes  made Products Inc.

info@BMP-Inc.com

www.BMP-Inc.com

Cottage Dock Plans



Clean. Simple. Classic. *Affordable.*

How to Use These Cottage Dock Plans

Bestmade Products Incorporated has made these Cottage Dock Plans available to its customers as a resource to aid in the building of a dock for residential use.

Bestmade Products Incorporated assumes no liability for the quality and structural integrity of the docks built in accordance with these plans. Only qualified individuals should attempt to build this dock and each situation of use should be carefully considered and monitored as to ensure the dock being built is sufficiently robust to perform the tasks needed to maintain continual safety. These dock plans may not be sufficient for every application and Bestmade Products provides no guidelines for maximum loads and appropriate uses.

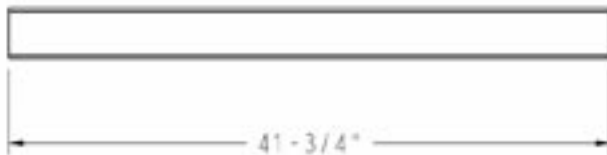
Prior to the purchase of any materials or building of any structures, one should read and understand these Cottage Dock Plans in their entirety and be confident in their ability to perform the necessary tasks.

Please contact Bestmade Products Incorporated should there be any questions.

Materials List and Wood Cut Lengths

Purchased Materials per Section of Dock		
Item #	Description	Quantity
1	2x6 Pressure Treated Board, 96" (8ft) Long	4
2	5/4x6 Pressure Treated Deck Board, 96" (8ft) Long	8
3	2x4 Pressure Treated Board, 96" (8ft) Long	2
4	ACQ Deck Screw, 3" Long	18
5	ACQ Deck Screw, 2" Long	68
Table 1		

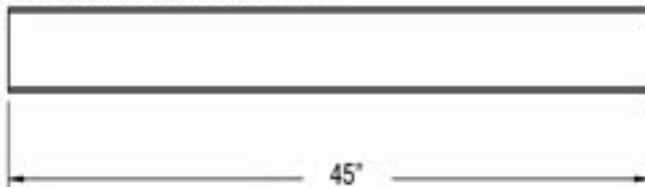
Make 4 Boards From Item 3



Make 16 Boards From Item 2



Make 2 Boards From Item 1



Make 1 Board From Item 1



Make 2 Boards From Item 1



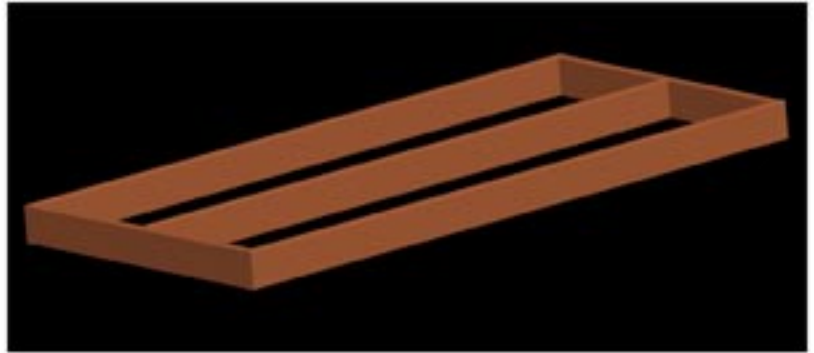
-The materials specified in Table 1 should be purchased from a local lumber yard for each section of dock.

-Cut pressure treated boards to lengths shown.

*96" long boards typically run longer as purchased and may still need to be cut to length.

Step 1:

Dock Frame Assembly



-The following purchased materials will be used in the assembly of the Dock Frame.

Dock Frame Assembly Materials	
Description	Quantity
ACQ Deck Screw, 3" Long	18
ACQ Deck Screw, 2" Long	12
2x6 Pressure Treated Side Board, 96" Long	2
2x6 Pressure Treated Center Board, 93" Long	1
2x6 Pressure Treated End Board, 45" Long	2
5/4x6 Pressure Treated Deck Board, 48" Long	2



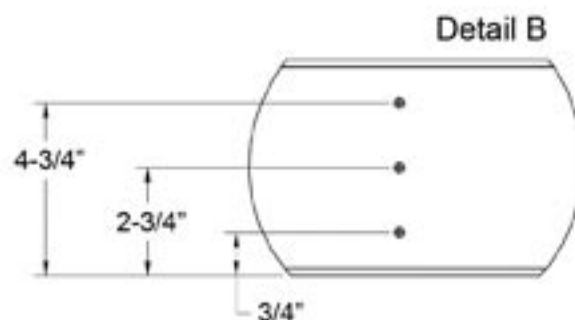
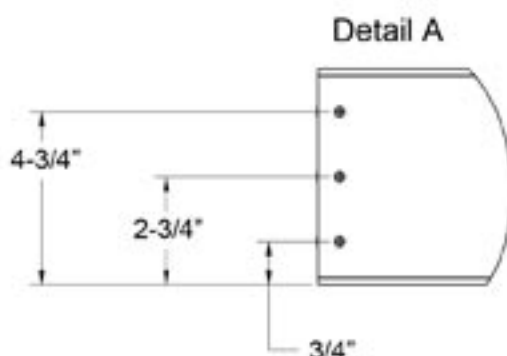
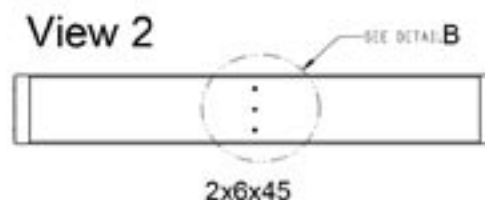
Dock Frame Assembly, Cont'd



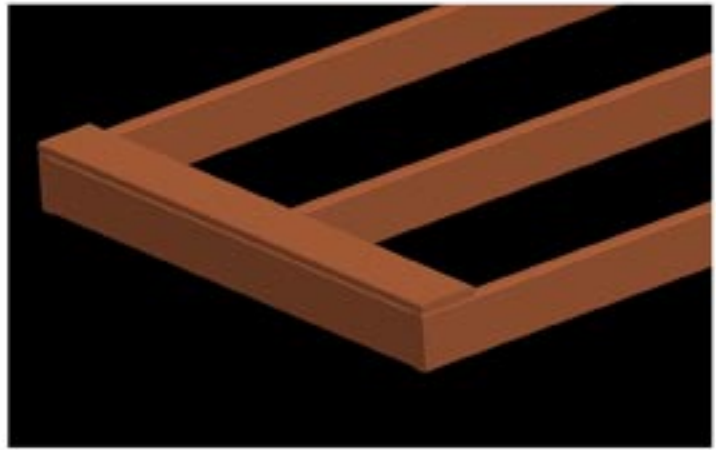
-Start by positioning the (2) 2x6x96" side boards and (2) 2x6x45" end boards as shown to form the outside of the Dock Frame. Fasten the boards together with (3) 3" long ACQ deck screws in each of 4 locations (2 locations shown View 1, 2 locations opposite side). Reference Detail A for screw location dimensions.



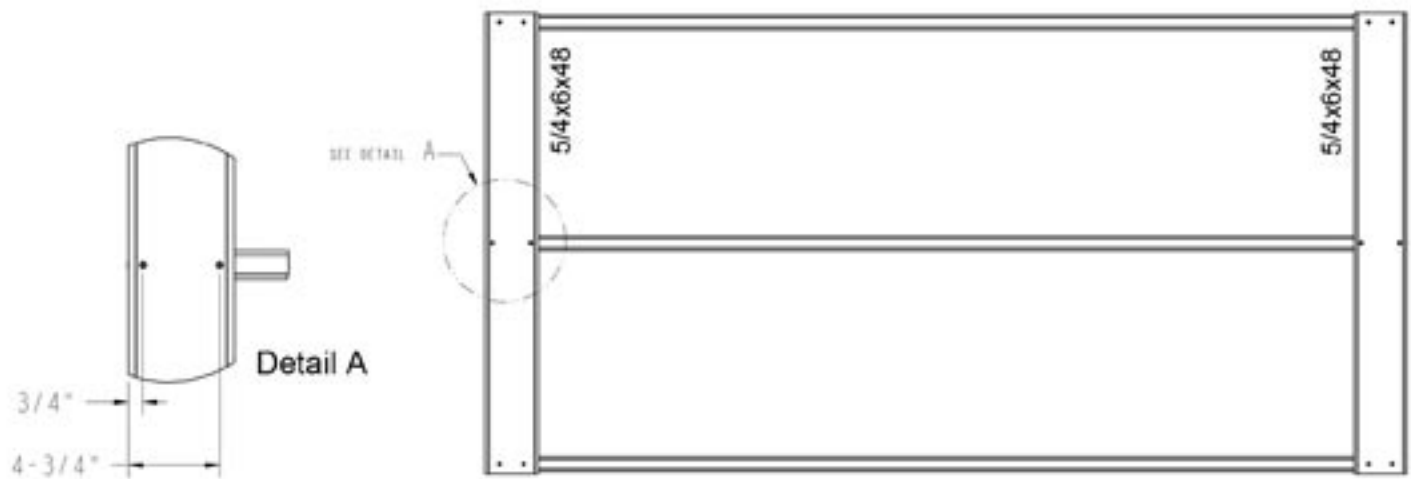
-Next, position the 2x6x93" center board in the center of the Dock Frame. Fasten with (3) 3" long ACQ deck screws in each of 2 locations (1 location shown in View 2, 1 location opposite side). Reference Detail B for screw location dimensions.



Dock Frame Assembly, Cont'd

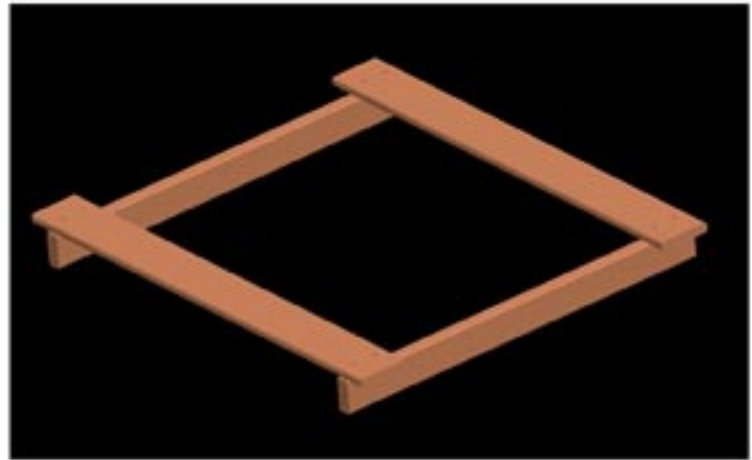


- At this point a 5/4x6x48" long deck board should be fastened onto each side of the dock frame with 2" long ACQ deck screws.
- Deck boards should be centered on the frame and aligned with the ends as shown.
- 2" ACQ deck screws are to be spaced as shown in Detail A at the 3 locations shown on each board (6 locations total).



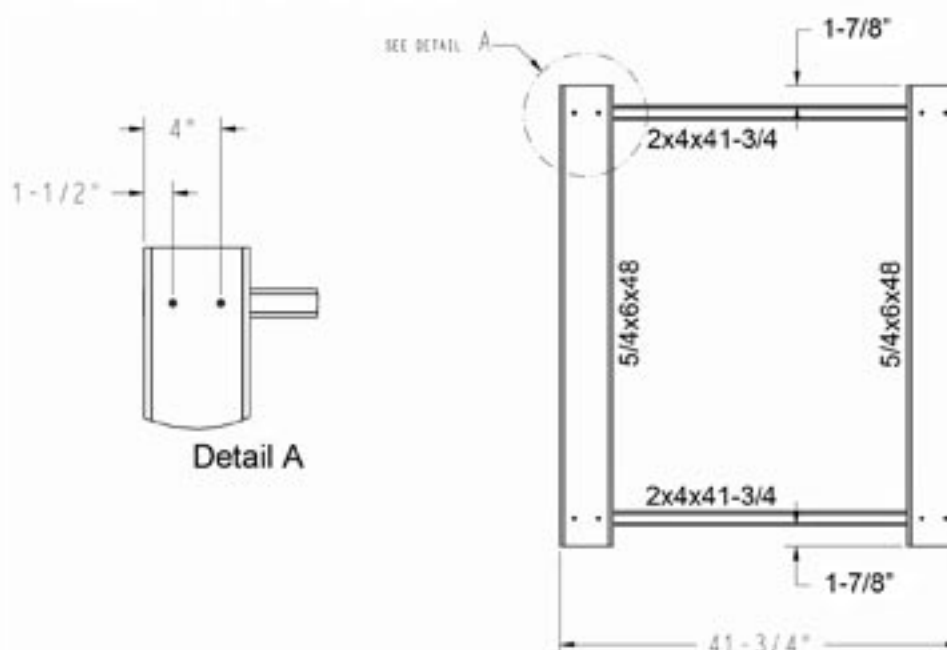
Step 2:

Deck Insert Assembly

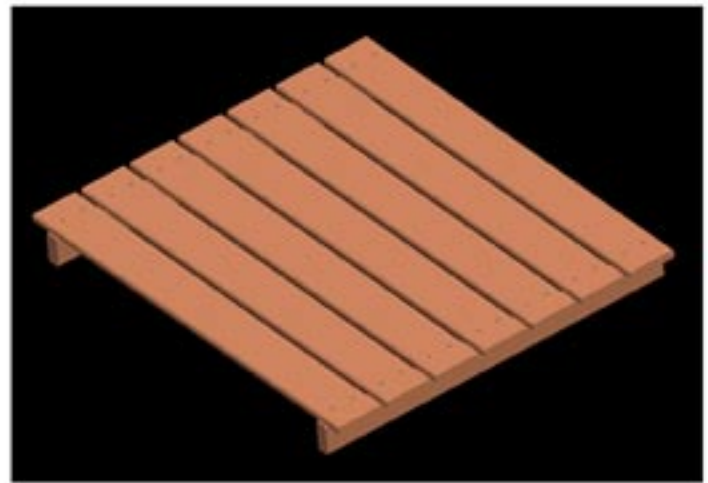


Deck Insert Assembly Materials	
Description	Quantity
ACQ Deck Screw, 2" Long	28
2x4 Pressure Treated Board, 41-3/4" Long	2
5/4x6 Pressure Treated Deck Board, 48" Long	7

- Set aside the Dock Frame assembly and begin the Deck Insert assembly.
- Using 2" ACQ deck screws, fasten the (2) 5/4x6x48" long deck boards to the (2) 2x4x41-3/4" long side boards.
- Deck boards are to be secured with 2 screws in each of the 4 locations per the dimensions shown.
- Special care should be taken to ensure all corners of the Deck Insert assembly are square.



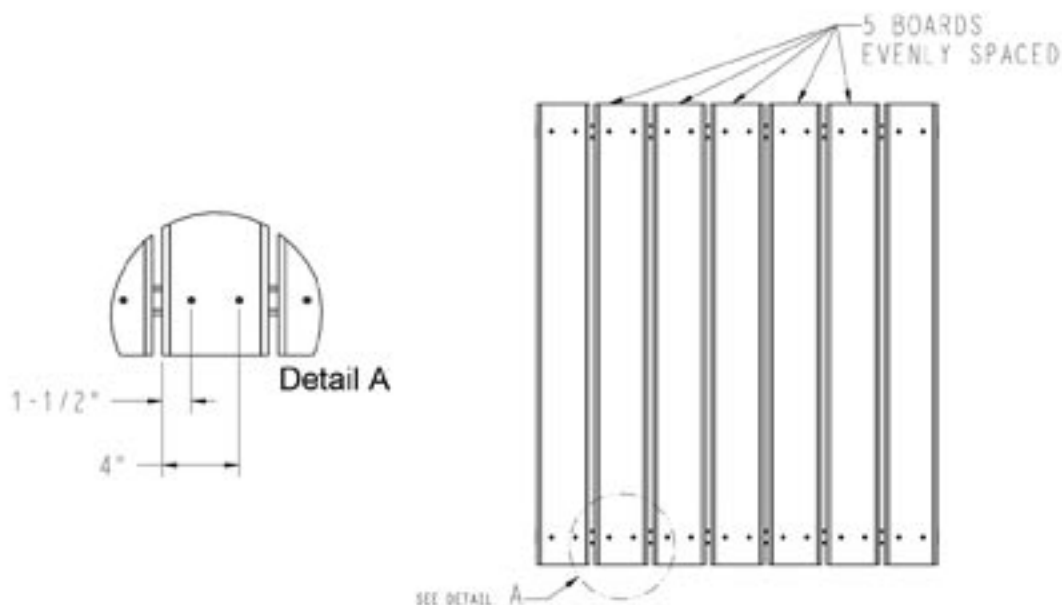
Deck Insert Assembly, Cont'd



-Using 2" long ACQ deck screws, fasten (5) of the 5/4x6x48" long deck boards to the (2) 2x4x41-3/4" long side boards in the same manner as on the previous page.

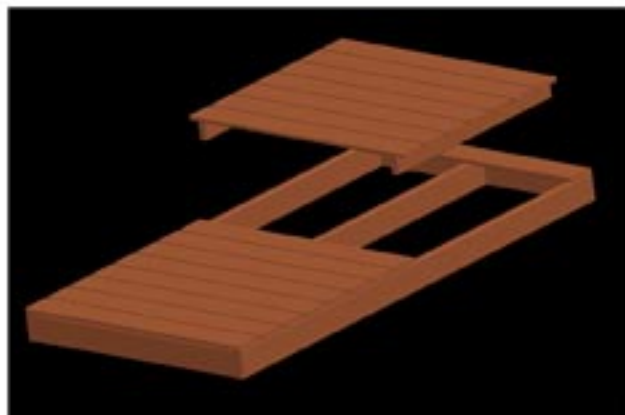
-Deck boards should be evenly spaced and secured at the locations shown.

-It is beneficial if the deck boards are laid out prior to fastening to aid in even spacing.

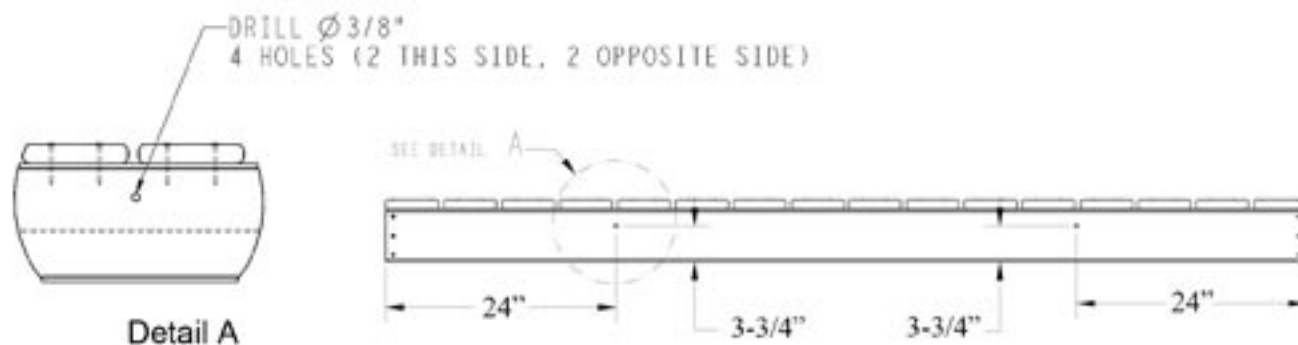


2 Deck Inserts required per section of dock

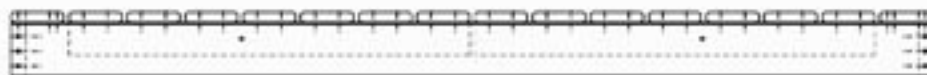
Step 3: Deck Insert Holes



- Place each of the 2 Deck Inserts into the Dock Frame as shown.
- Drill 4 holes of 3/8" diameter through the Dock Frame and into each of the 2 Deck Inserts at the locations shown.

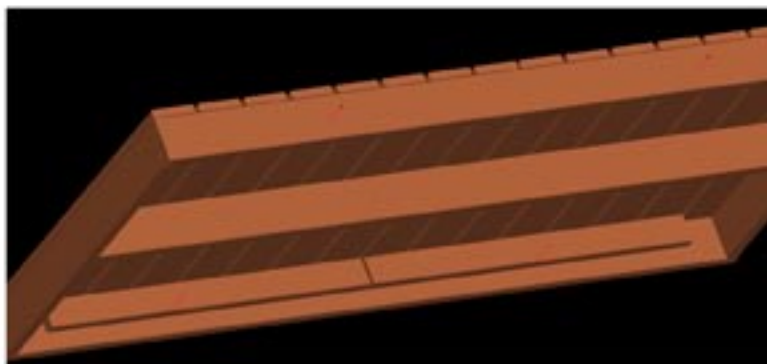


At this point, each Deck Insert should be labeled with permanent marker to match its corresponding Dock Frame.



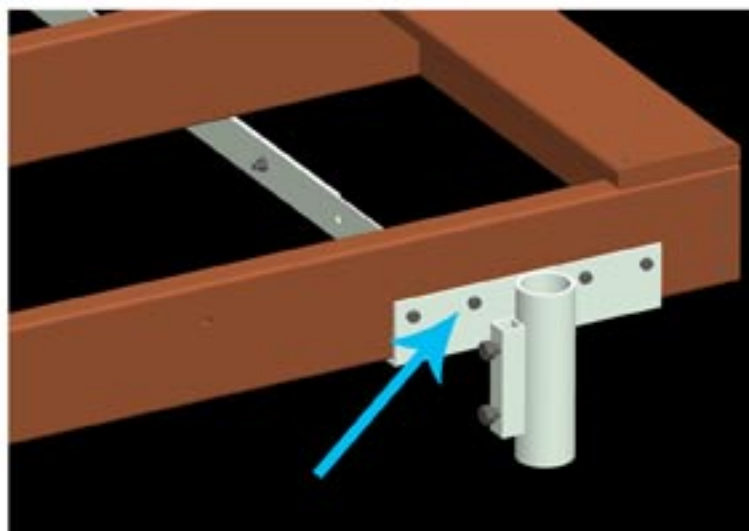
For example, each Dock Frame and Deck Insert should have arrows for orientation and each insert have an A or B (Dock 3 would have a 3 on the frame and a 3A or 3B on each insert).

Hidden lines shown for reference.



Step 4: **Installation** **of** **Stanchions**

-Upon completion of Step 3, each of the 2 Deck Inserts may be removed and set aside until installation in the water.



4 holes w/ hex bolts

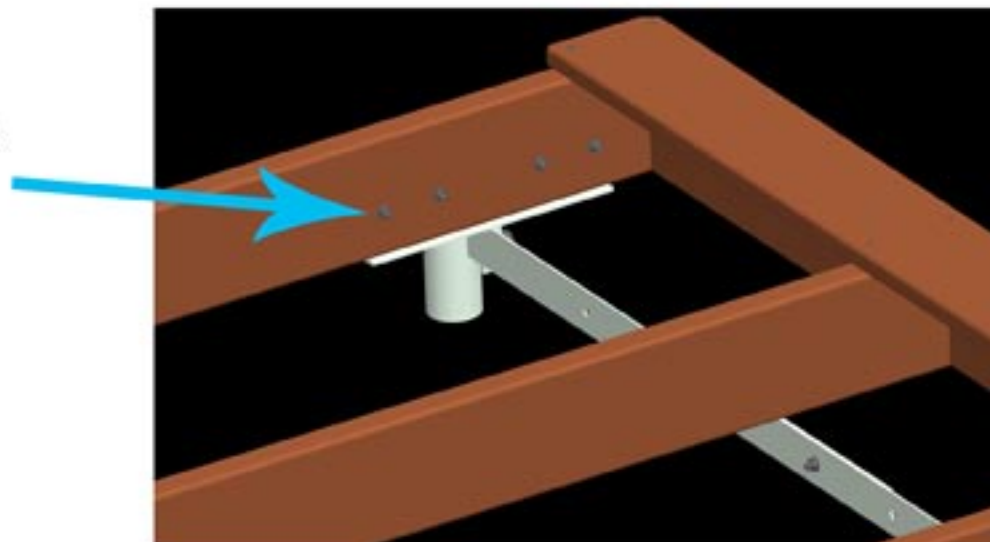
-Position stanchion 1 as shown and drill $\frac{3}{8}$ " diameter holes through the 4 stanchion mounting holes and through the Dock Frame on each side (8 holes total).

-Using $\frac{5}{16}$ x 2- $\frac{1}{2}$ " long hex bolts, $\frac{5}{16}$ " hex nuts, and $\frac{5}{16}$ " flat washers, fasten stanchion 1 to the Dock Frame as shown on each side.

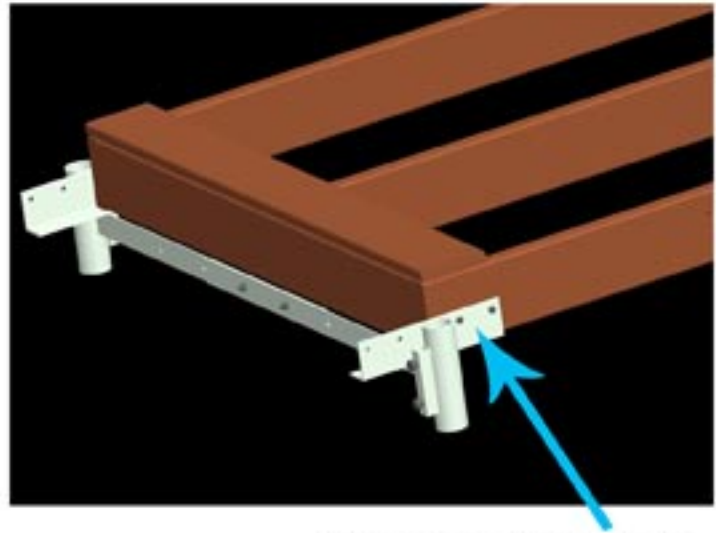


-It should be noted that only the starter section uses 2 stanchions (1 on each side). Each subsequent section would use only 1 stanchion (stanchion 2) on one side and share the stanchion of the previous section on the other.

4 hex nuts
and 4 flat
washers



Installation of Stanchions, Cont'd



2 holes w/ hex bolts

-Next, position stanchion 2 as shown and drill $\frac{3}{8}$ " diameter holes through the 2 stanchion mounting holes and Dock Frame on each side (4 holes total).

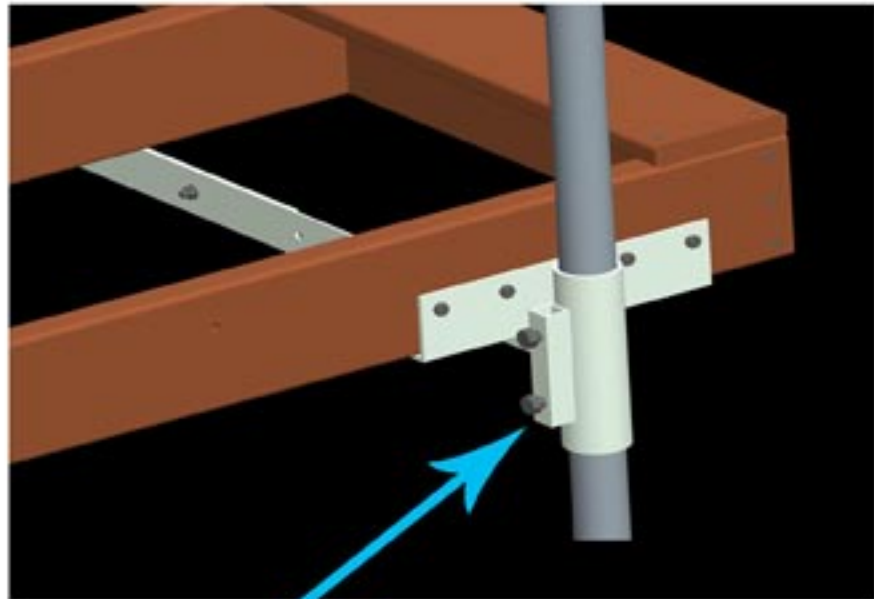
-In the same manner as the previous stanchion, using $\frac{5}{16}$ x $2\frac{1}{2}$ " long hex bolts, $\frac{5}{16}$ " hex nuts, and $\frac{5}{16}$ " flat washers, fasten the stanchions to the Dock Frame.

*** ONLY THE STARTER SECTION NEEDS 2 STANCHIONS ***

-Subsequent sections would only use one stanchion as shown in the next step, Step 5.

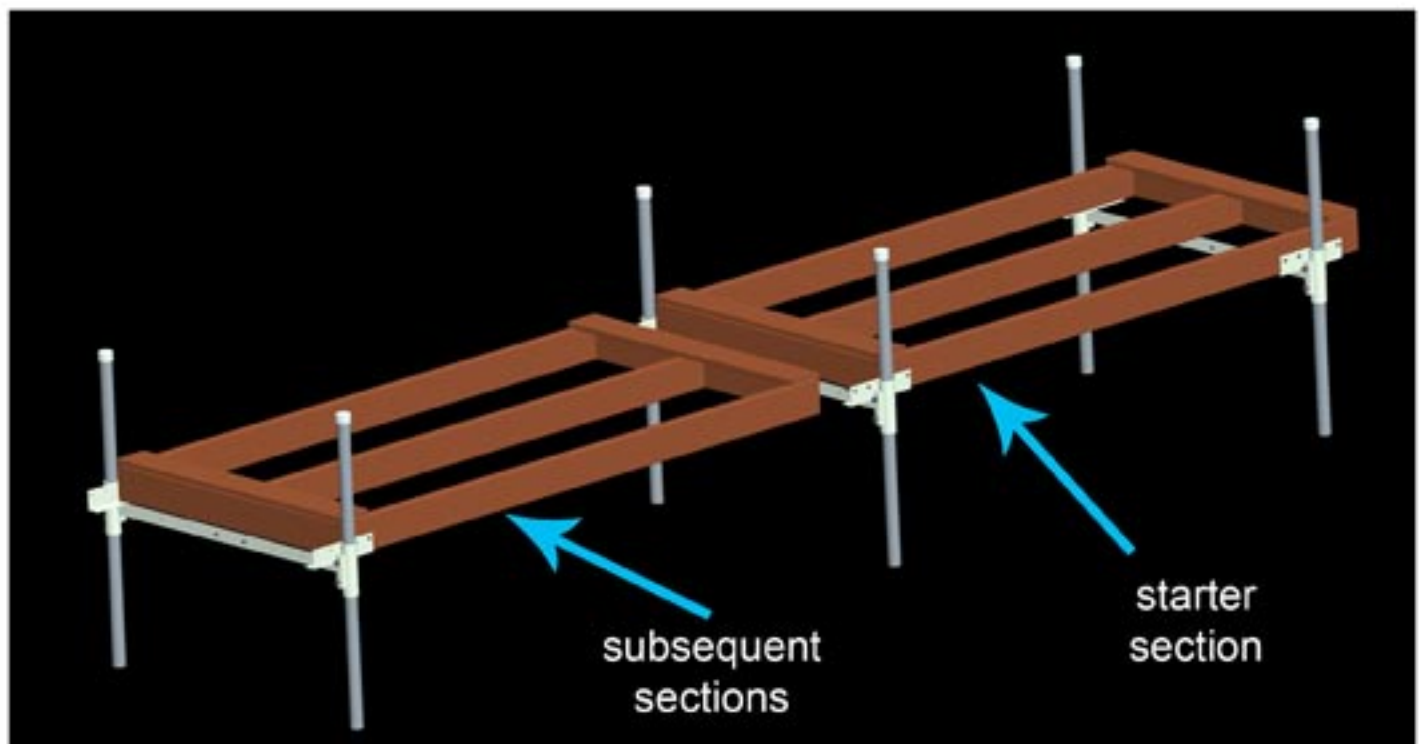


Step 5: **Installation** **of Support** **Pipes and** **Set Bolts**



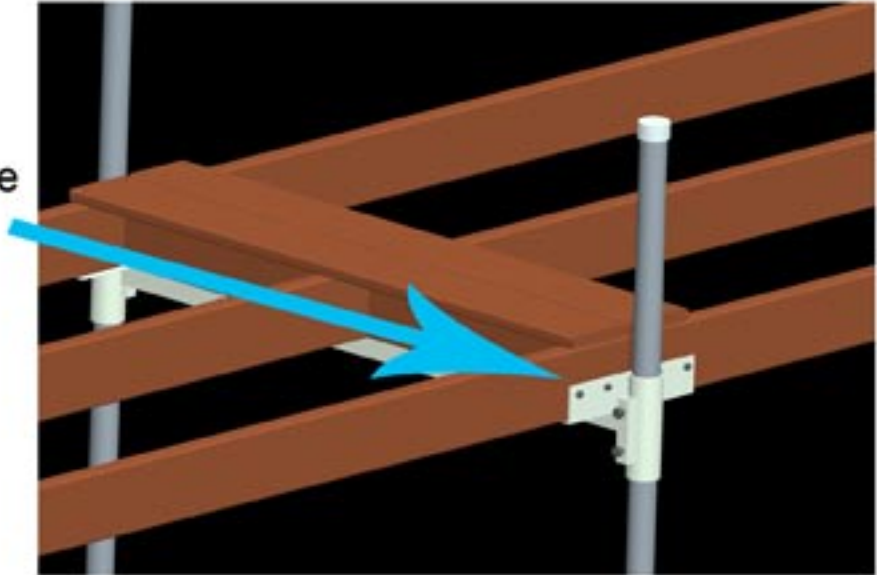
1/2" Set Bolts

- At this point the support pipes may be positioned inside the stanchions and adjusted to their appropriate height using the 1/2" set bolts provided.
- Torque the set bolts to between 20 and 30 ft-lbs to prevent slippage during use.
- The starter section should be set up first with each subsequent section interfacing the previous as shown.

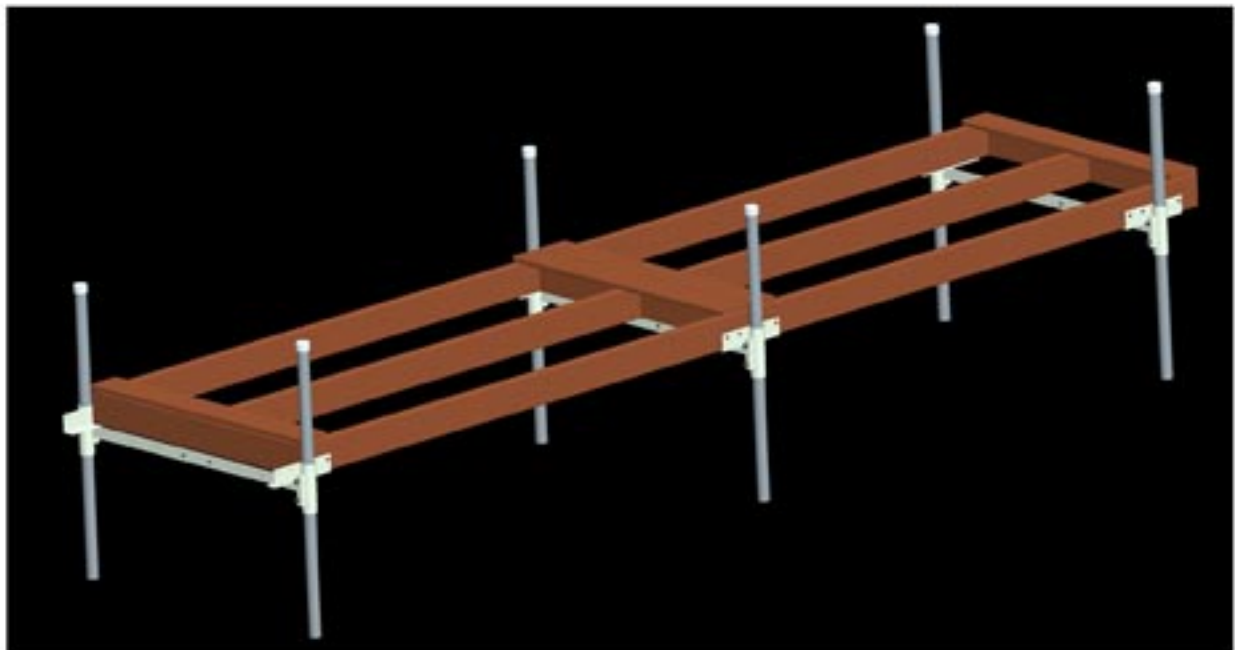


Step 6: Connecting Sections

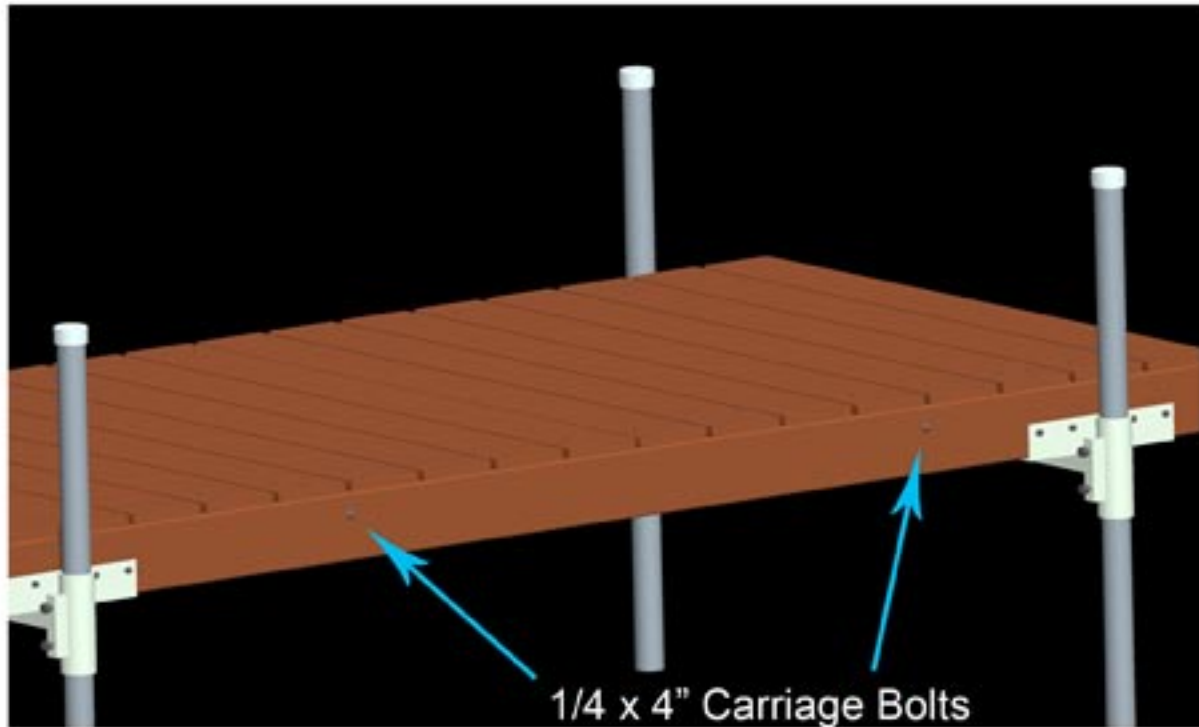
5/16" bolts (2 shown, 2 opposite side of dock)



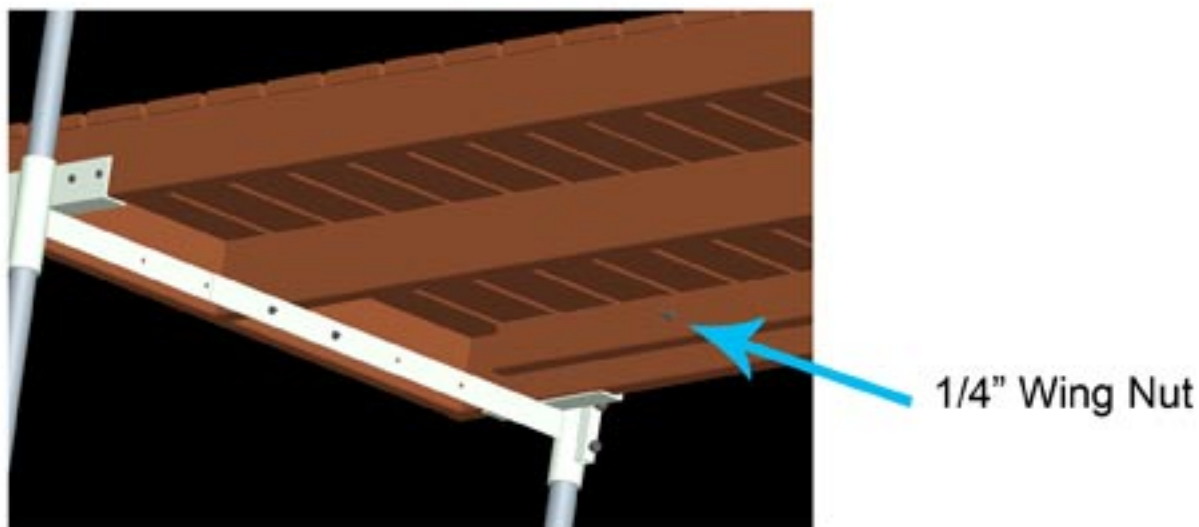
- After positioning the first section, the subsequent sections can be placed. Subsequent sections will have 1 stanchion each and share the stanchion of the previous section.
- Position the subsequent sections by placing them in the previous section's stanchion, butting up against the Dock Frame.
- Fasten the subsequent sections through the stanchions in the same manner as Step 4 by drilling 3/8" holes through the stanchion mounting holes and Dock Frame.
- Secure the section using 4 (2 on each side) 5/16 x 2-1/2" long hex bolts with 5/16" flat washers and 5/16" hex nuts.



Step 7: Fastening Deck Inserts to Installed Dock Frame



- Once the dock sections have been installed and secured, the 2 Deck Inserts per section can be installed.
- Place each Deck Insert into its mating section in the order and orientation in which it was previously marked in Step 3.
- Insert a 1/4 x 4" long carriage bolt into each of the 4 previously drilled holes (2 holes per Deck Insert). A 1/4" wing nut should be fastened onto the carriage bolts on the under side of the dock to secure the Deck Inserts.



Congratulations on the construction of your new dock!
Repeat steps as necessary for additional sections.

Inspection and Maintenance

1. Inspection and Maintenance Introduction

To ensure your dock performs at an exceptional level for the lifetime of the product, and to prevent compromising the safety of the dock, the following preventative maintenance should be performed.

2. Annual Inspection

At least once a year, the docks must be thoroughly inspected using the following procedure:

- A. Check and torque all bolts to the proper specification listed in the fasteners section of this manual.
- B. Check the docks for rotted, cracked, split, or broken members.
- C. Check all parts of the frame and deck thoroughly for defects of any kind.
- D. Lube all leg tensioning bolts with a good quality marine grade anti-seize or grease.

3. Storage Procedure

When storing your docks, use the following procedure:

- A. Protect your docks as best as possible from airborne fallout, chemicals, tree sap, ice, or other weather hazards.
- B. Never use the docks to lift or hang any auxiliary equipment such as boating hardware.
- C. Do not allow anyone to swim, wade, or play near the stored docks at any time.
- D. Store your docks in a location that will be safe and out of harm's way.